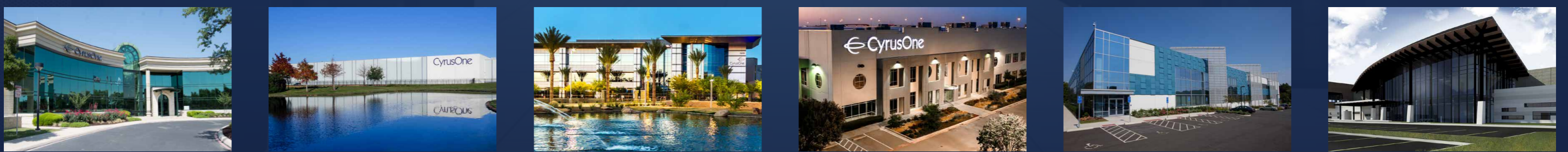


CyrusOne Connects

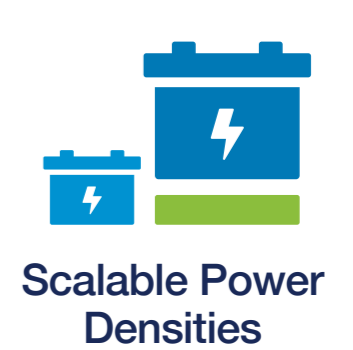
Robust connectivity with The National Internet Exchange (IX)

LEARN MORE

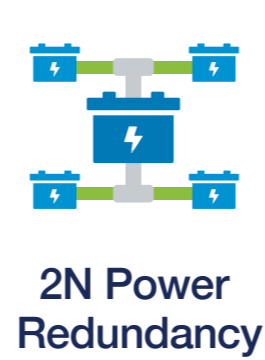
30+ DATA CENTERS WORLDWIDE | Find Data Center Space Now



Flexible and Scalable Data Center Solutions



Proven, Innovative Technology



Exceptional Service by Resident Experts



Latest News

Global Data Center Provider CyrusOne Purchases 40 Acres in Northern Virginia.

[Read the Press Release](#)

More News Links

Resources

Virtual Tours

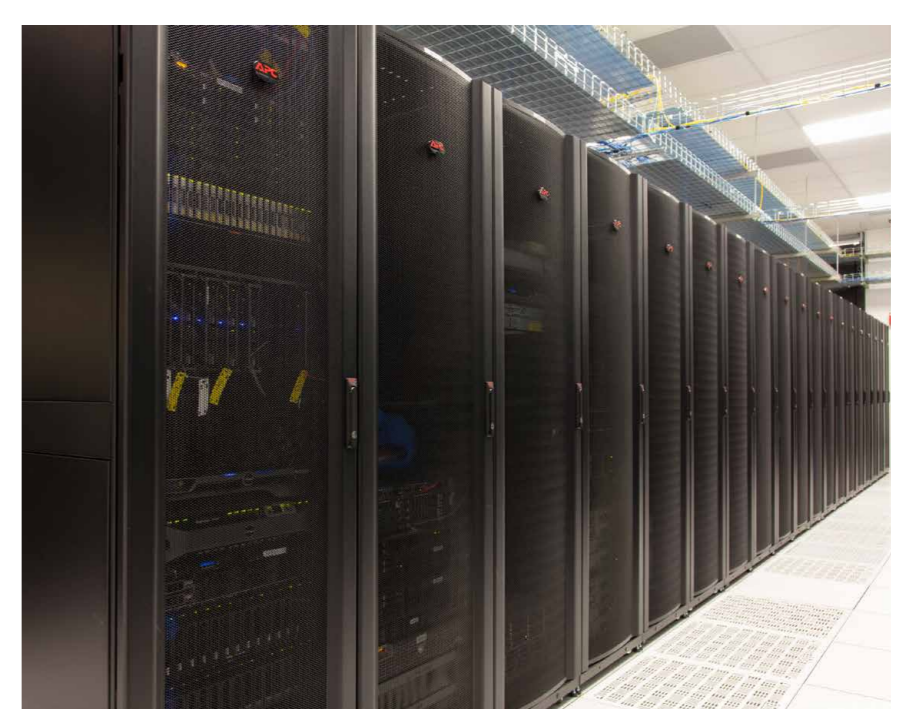
- Enterprise Data Center & Colocation Provider
- Operating More Than 30 Global Data Centers
- Why CyrusOne?**
- About CyrusOne

Offload Specific IT Operations

Join nearly half of the Fortune 20 companies who have selected CyrusOne to reduce their burden of data center operations and let CyrusOne successfully deliver reliable, mission-critical data center services at a scale unmatched by competitors.

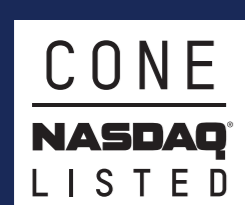
With CyrusOne you enjoy:

- Flexible, Scalable Solutions** – Receive flexible data center solutions that readily scale to match the needs of your growing business.
- Proven, Innovative Technology** – Benefit from the latest data center innovations. CyrusOne expert technicians can put to work for your IT environment.
- Exceptional Service** – Enjoy personalized consultative service through all stages of the relationship – design, build, installation, management, and reporting.



WHY CYRUSONE?

With over 30 locations worldwide, CyrusOne is trusted by nearly half of the Fortune 20 and more than 175 of the F...



CyrusOne Headquarters

1649 West Frankford Road
Carrollton, TX 75007
Toll Free: 855-564-3198

Quick Links

- Data Center Locations
- Services
- Benefits
- Customers
- News
- Partners
- Industries
- Company
- Resources
- Investors

Colocation Solutions

HOME > ENTERPRISE DATA CENTER SERVICES > COLOCATION SOLUTIONS



Offload Specific IT Operations

Many enterprises are partnering with colocation solutions providers to support growth initiatives and limit costs rather than expanding their company-owned data centers.

Colocation enables businesses to place their IT infrastructure in specially designed and highly secure data centers without space, technology, or connectivity constraints.

Driving the trend toward colocation solutions is the ability for companies to mitigate risks, scale faster, and reduce Capex and Opex.

[REQUEST A PROPOSAL](#)

[REQUEST A PROPOSAL](#)

[SCHEDULE A TOUR](#)

[LIVE CHAT](#)

[TAKE A VIRTUAL TOUR](#)

[SEE ALL RESOURCES](#)

Benefits of Colocation Solutions with CyrusOne

CyrusOne delivers advanced, highly reliable design architectures to support flexible power requirements (2N, N, or both) and rack power densities of 250 watts per square foot or up to 900 watts per square foot.

Large and small companies trust CyrusOne's outstanding reliability coupled with:

- [Flexible, scalable solutions](#)
- [Proven, innovative technology](#)
- [Exceptional service](#)

Flexible, Scalable Solutions

Receive flexible data center solutions that readily scale to match the needs of your growing business – today and in the future:

- Thorough assistance in the scoping, engineering, and implementation phases
- Massively Modular® engineering to deliver data halls within 12-16 weeks to ensure space is available when needed
- Redundancy tailored to the rack level to enable you to choose the level of power redundancy needed for your applications (2N, N, or both)
- Contract flexibility to ramp into your purchased power and space over a specific period of time
- Freedom to choose your own managed service providers
- Dedicated or shared office space available
- Available 100% Uptime Service Level Agreements (SLA).

Why Big Internet Organizations Need Big Data

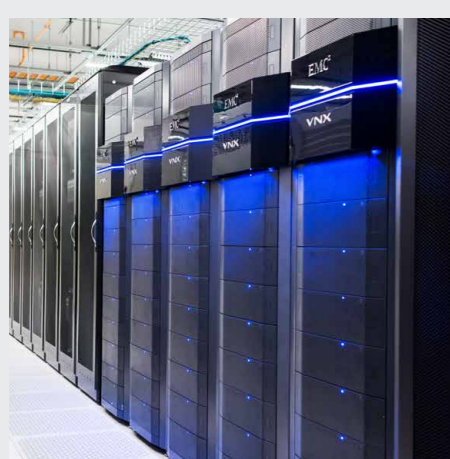
To meet the unprecedented growth of the digital universe, Big Internet companies are required to scale massively and with extraordinary speed.

[DOWNLOAD REPORT](#)

News

Global Data Center Provider CyrusOne Purchases 40 Acres in Northern Virginia.

[READ MORE](#)



Proven, Innovative Technology

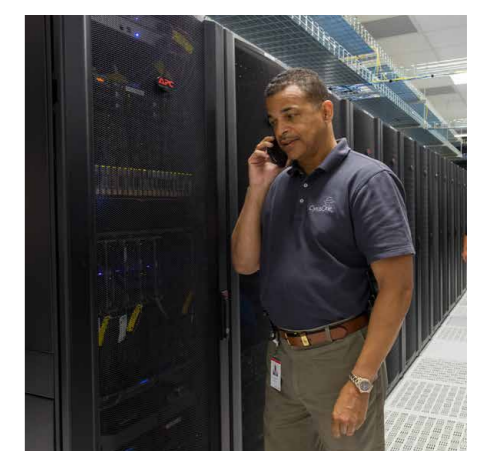
Benefit from the latest data center innovations CyrusOne expert technicians can put to work for your IT environment:

- Power densities up to 900 watts per square foot enable your server environment to scale vertically to optimize your configuration
- Low to ultra-high density solutions tailored to the rack level
- **Certifications and audits:** SSAE16, TIA 942 Top Tier, ISO 27001, HIPAA, PCI-DSS, FISMA
- Massively Modular® data center engineering for build outs within just 12-16 weeks
- The [CyrusOne National IX](#) provides robust, low-cost connectivity within and between metros to help you drive revenue, reduce expenses, and improve service quality
- The CyrusOne [Multi-Facility Interconnection Platform](#) enables you to mix and match data centers using the National IX connectivity for production and disaster recovery needs
- [CyrusOne Solutions](#) enables companies to work with CyrusOne's experienced design team to build a custom solution
- Up to 2N redundancy of mechanical and electrical systems to provide a highly resilient environment with no single point of failure.

Exceptional Service

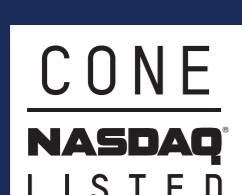
Enjoy personalized, consultative service through all stages of the relationship – design, build, installation, management, and reporting:

- Service activities led by CyrusOne employees
- Data centers designed and built by CyrusOne to the highest industry standards
- CyrusOne engineering and design services include power and usage projections, floor planning, connectivity assessment, and implementation scheduling
- An experienced implementation team is assigned to every account. That team understands the complexities of various-sized organizations' requirements for key processes, information handling, and security needs, as well as change management, incident management, and service management
- No hidden tack-on fees for building management, security personnel, janitorial services, and preventative maintenance
- Transparency in communications, management, billing, and service delivery
- Available customer references and direct access to the CyrusOne executive team.



WHY CYRUSONE?

With over 30 locations worldwide, CyrusOne is trusted by nearly half of the Fortune 20 and more than 175 of the F...



CyrusOne Headquarters

1649 West Frankford Road
Carrollton, TX 75007
Toll Free: 855-564-3198

Quick Links

- [Data Center Locations](#)
- [Partners](#)
- [Services](#)
- [Industries](#)
- [Benefits](#)
- [Company](#)
- [Customers](#)
- [Resources](#)
- [News](#)
- [Investors](#)

Texas Data Centers

CyrusOne

SHOP SPACE

Austin Data Centers

- Austin I
- Austin II
- Austin III

Dallas Data Centers

- Carrollton
- Downtown
- Lewisville

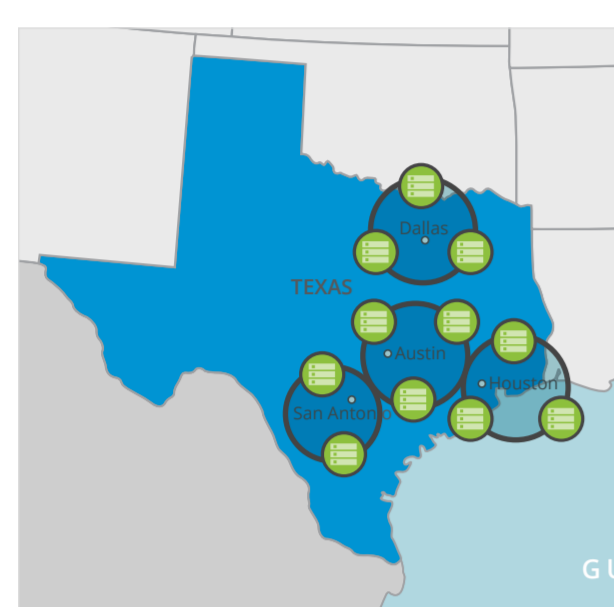
Houston Data Centers

- Galleria
- Greenspoint
- Houston West I
- Houston West II
- Houston West III

San Antonio Data Centers

- San Antonio I
- San Antonio II

HOME > DATA CENTER LOCATIONS > TEXAS



Texas Data Centers – CyrusOne

CyrusOne's home state is Texas and it is where we have the most data center capacity. As the only public data center with headquarters in Texas, we find this area is an excellent market for colocation due to its low risk of natural disasters, available fiber, and low operating costs. Our operations are based in Carrollton, just north of Dallas; however, CyrusOne has invested in multiple locations around the state.

REQUEST A PROPOSAL

SCHEDULE A TOUR

LIVE CHAT

TAKE A VIRTUAL TOUR

SEE ALL RESOURCES

OTHER TX LOCATIONS

Dallas, Texas – Home of CyrusOne Headquarters

Carrollton Downtown Lewisville

In the Dallas, Texas area, we have three facilities, one downtown, one in Carrollton and another in Lewisville. Our Carrollton colocation is not only amongst the most energy efficient data centers in the United States, it is the **largest data center in the state of Texas**. All of our Dallas, Texas facilities are part of our National Internet Exchange and together offer more than 870,000 square feet of data center space.



Austin, Texas

Austin I Austin II Austin III

In the Texas capital of Austin, CyrusOne has three data center locations. Two of these colocations are within just a few minutes of Austin-Bergstrom International Airport. They are carrier-neutral and have a dark-fiber connectivity option. The data centers also have CRAH units with electronically computed variable speed fans to maintain the air distribution, temperature, and humidity. The third data center location can be found in the Met Center business park. This facility has the ability to hold up to 9 MW of critical power as well as two 400 MW capacity substations with dual underground concrete encased feeds from electrical substations. This data center has a 48-inch raised floor design and utilizes 70-ton CRAH units. Together, the data centers in Austin, Texas host 178,000 feet of raised white floor space.



Houston, Texas

Galleria Greenspoint Houston West I Houston West II Houston West III

On the coast of Texas are five separate colocations in Houston with each facility offering something unique. The Galleria data center is 100,000 square feet and is designed for high density computing that sits on the same power ring as the Emergency Broadcasting Network. The Greenspoint center is 15,000 square feet and is ideal for gaming or online entertainment web hosting customers. On the west side of Houston, three data centers are strategically placed along a major fiber corridor to bring our clients the fastest and most reliable telecommunication networks. All Houston colocations are carrier neutral and part of our National Internet Exchange, which is available throughout Texas and various parts of the United States. These data centers all have at least a 36-inch raised floor design and a 2.25 MW Detroit Diesel generator.



San Antonio, Texas

San Antonio I San Antonio II

In San Antonio, Texas lies two CyrusOne data centers with almost 300,000 square feet total colocation space. Each data center has a 36-inch raised floor design with CRAH units in place for optimal cooling. Located just 17 minutes from the San Antonio International Airport, the CyrusOne data centers are just minutes from several hotels and restaurants. Our new colocation center will offer 30,000 square feet of Class A office space, a fitness center, numerous break rooms and collaboration centers for our clients to enjoy.



Learn More About CyrusOne Texas Colocation

If you would like to learn more about what our Texas data centers have to offer please schedule a tour or you can simply contact us today.

SCHEDULE A TOUR

CONTACT CYRUSONE

WHY CYRUSONE?

With over 30 locations worldwide, CyrusOne is trusted by nearly half of the Fortune 20 and more than 175 of the F...



Built for Tomorrow. Ready Today.



CyrusOne Headquarters

1649 West Frankford Road
Carrollton, TX 75007
Toll Free: 855-564-3198

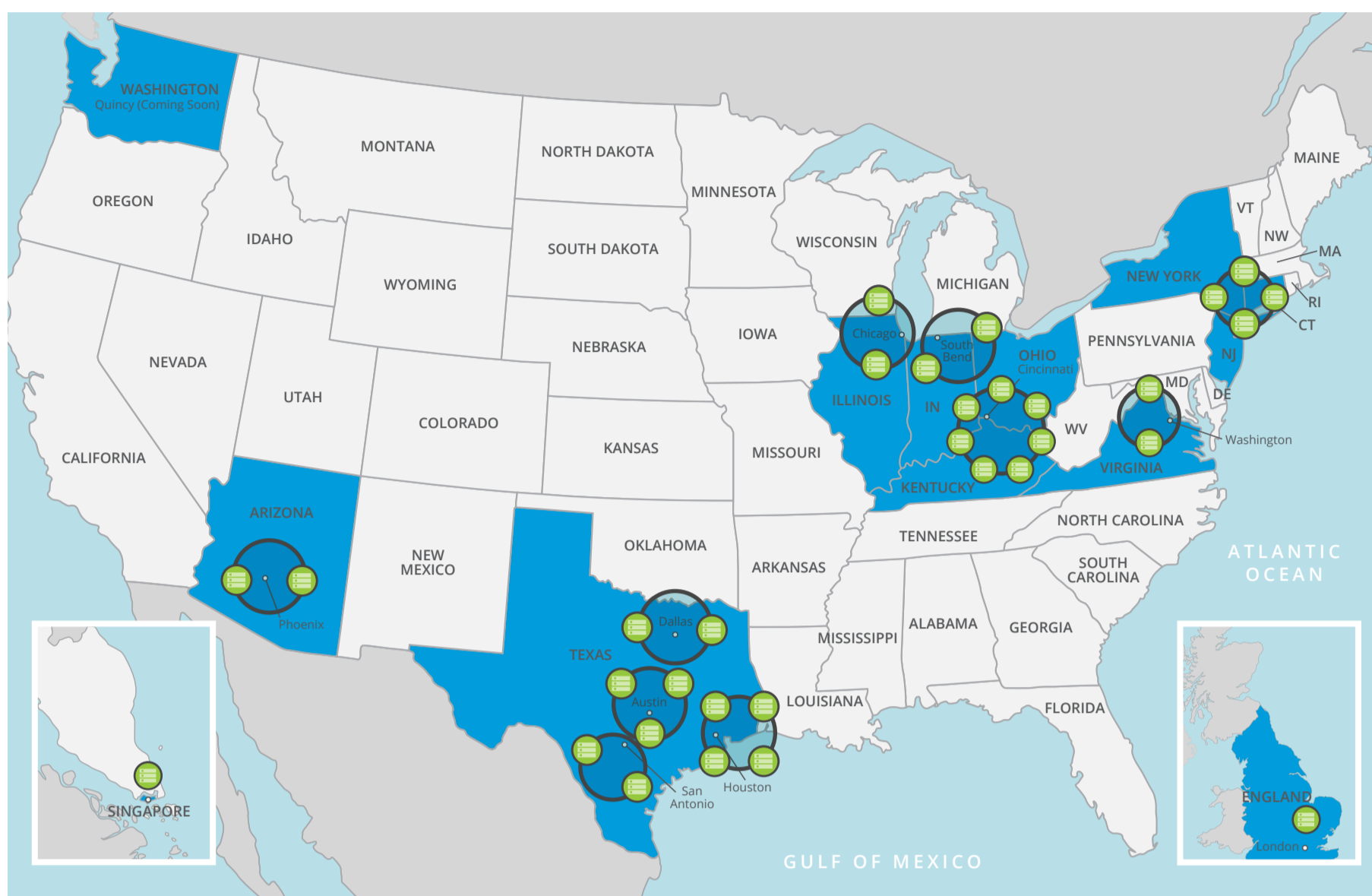
Quick Links

- Data Center Locations
- Partners
- Services
- Industries
- Benefits
- Company
- Customers
- Resources
- News
- Investors

Data Center Locations

Home > Data Center Locations

CyrusOne can support every data center solution, with more than 30 data centers across the United States, Europe, and Asia.



REQUEST A PROPOSAL

SCHEDULE A TOUR

LIVE CHAT

TAKE A VIRTUAL TOUR

SEE ALL RESOURCES

Data Center Locations

Arizona

- ▶ Phoenix – Chandler I
- ▶ Phoenix – Chandler II

Connecticut

- ▶ Norwalk
- ▶ Stamford

Illinois

- ▶ Chicago – Aurora I
- ▶ Chicago – Lombard

Indiana

- ▶ South Bend – Crescent
- ▶ South Bend – Monroe

Kentucky

- ▶ Florence

New Jersey

- ▶ Totowa

New York

- ▶ Wappingers Falls I

Ohio

- ▶ Cincinnati – 7th Street
- ▶ Cincinnati – Blue Ash
- ▶ Cincinnati – Goldcoast
- ▶ Cincinnati – Hamilton
- ▶ Cincinnati – Mason
- ▶ Cincinnati – North Cincinnati

Texas

- ▶ Austin I
- ▶ Austin II
- ▶ Austin III
- ▶ Dallas – Carrollton
- ▶ Dallas – Downtown
- ▶ Dallas – Lewisville
- ▶ Houston – Galleria
- ▶ Houston – Greenspoint
- ▶ Houston – West I
- ▶ Houston – West II
- ▶ Houston – West III

San Antonio I

- ▶ See Details
- ▶ Shop Space

- ▶ San Antonio II

Virginia

- ▶ Northern Virginia – Sterling

Singapore

- ▶ International Business Park

United Kingdom

- ▶ London – Woking



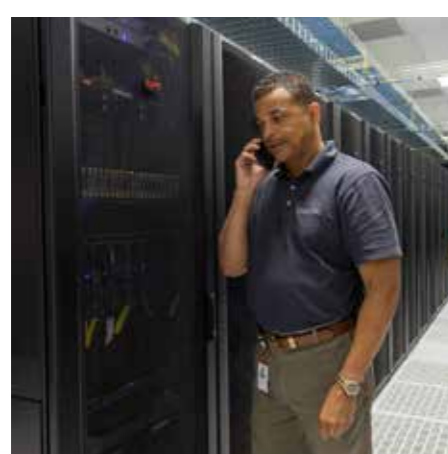
New Feature Location: Austin III

Located in the Met Center business park, CyrusOne's newest data center location Austin III provides 172,000 total square feet of shell and offers 120,000 colocation square feet (CSF), with up to 18 megawatts of power, and over 25,000 sq. ft. of class A office space at full build. Find out why CyrusOne's Austin III location is your top pick for colocation in Texas.

▶ EXPLORE AUSTIN III

Data Center Support

HOME > ENTERPRISE DATA CENTER SERVICES > COLOCATION SOLUTIONS



Customer Service & Satisfaction Delivered Around-the-Clock

CyrusOne professionals keep an around-the-clock vigil on data center environments and critical systems utilizing the latest monitoring tools, management systems, and time-tested processes. In addition, you get:

- Highly trained and certified technical and facilities staff, on premise and available 24x7x365
- Remote Hands to perform tape rotations and hardware swaps when your team is overextended
- Constant management of all environmental systems (power, HVAC, fire, security, and IDS).

REQUEST A PROPOSAL

SCHEDULE A TOUR

LIVE CHAT

TAKE A VIRTUAL TOUR

SEE ALL RESOURCES



Inquirers and Future Customers

Sales and Information

Toll Free: 855-564-3198
Main: 855-564-3198
Email: info@cyrusone.com

Press Information: Jacob Smith, (513) 346-3492

Analyst Information: Michael Schafer, (972) 350-0060

SCHEDULE A TOUR

CONTACT A COLO ADVISOR

TAKE A VIRTUAL TOUR

REQUEST A PROPOSAL



Customer Support

Customer Service:

CyrusOne: 855-564-3198
New York Area: (888) 467-8981
Email: customerservice@cyrusone.com

Billing and Accounts Receivable: (214) 488-1365

Payments and Accounts Payable: (214) 488-1365

TECHNICAL SUPPORT

SHOP SPACE

RESOURCES

LIVE CHAT

CyrusOne Customer Portal

The CyrusOne customer portal provides a convenient and easy way for customers to interact with CyrusOne and gather information on their environment. The online customer service portal, which will continue to add new features, currently boasts advanced support-ticket functionality, including original-request submissions and progress monitoring including service level agreement (SLA) compliance. Customers can also manage physical-access requests through portal email notifications to security-office staff and review the complete list of people granted access. All support and access changes are captured in a system log for review and future reference.

The CyrusOne customer portal also offers a shopping style ordering menu with virtual catalog of power whips, cross-connects and other available products with pictures and descriptions for placing orders. The portal enables users to subscribe to incident and change notifications based upon severity and risk levels, which are viewable on the portal or sent via email/SMS. Customers are also able to view billing information including invoices and installed orders.

Request Portal Access

Current customers can gain access to the CyrusOne Customer Portal by filling out the form below.

First Name Last Name

Company

Email Address

SUBMIT

The CyrusOne Commitment



Committed to Providing Excellent Customer Service



Committed to Open Communication



Committed to Deploying the Latest Technology



Committed to Culture that is Fun

WHY CYRUSONE?

With over 30 locations worldwide, CyrusOne is trusted by nearly half of the Fortune 20 and more than 175 of the F...



CyrusOne Headquarters

1649 West Frankford Road
Carrollton, TX 75007
Toll Free: 855-564-3198

Quick Links

- Data Center Locations
- Services
- Benefits
- Customers
- News
- Partners
- Industries
- Company
- Resources
- Investors